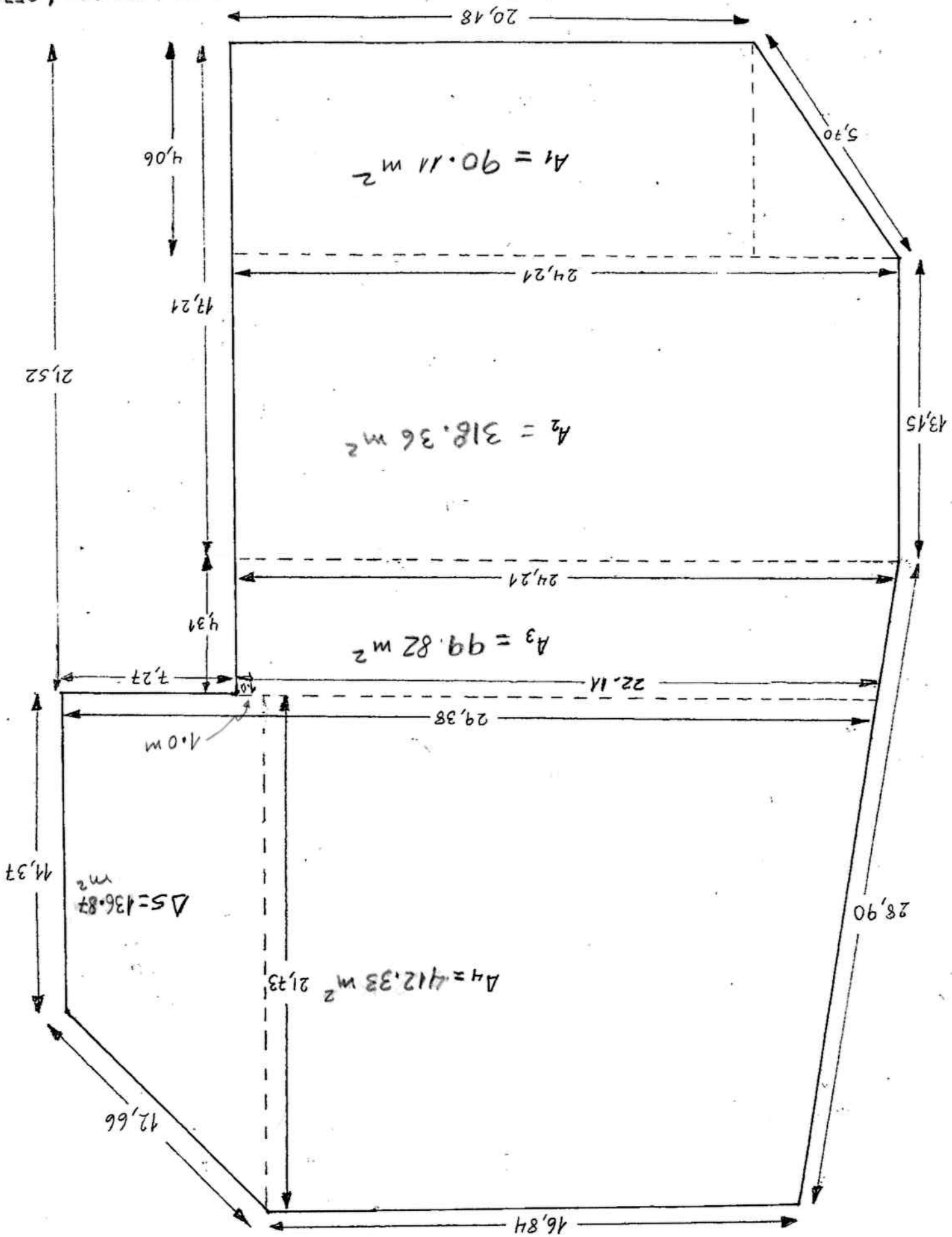


DIQUE TK4 Y TK5 - CONFIGURACION REAL
 $H = 1,80 \text{ m}$ (ALTURA DEL PARAPETO)



$$A_{\text{TOTAL}} = A_1 + A_2 + A_3 + A_4 + \Delta 5 = 90.11 + 318.36 + 99.82 + 412.33 + 136.87 = 1,057.49 \text{ m}^2$$